



DOORTRONIX, INC  
5783 C.R. 1219  
MALAKOFF, TX 75148  
TEL: 888-453-5196  
FAX: 888-579-4639  
www.doortronix.com

THE NEXT GENERATION OF AUTOMATIC DOORS

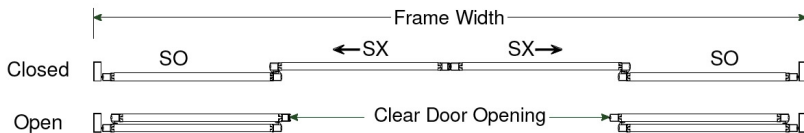
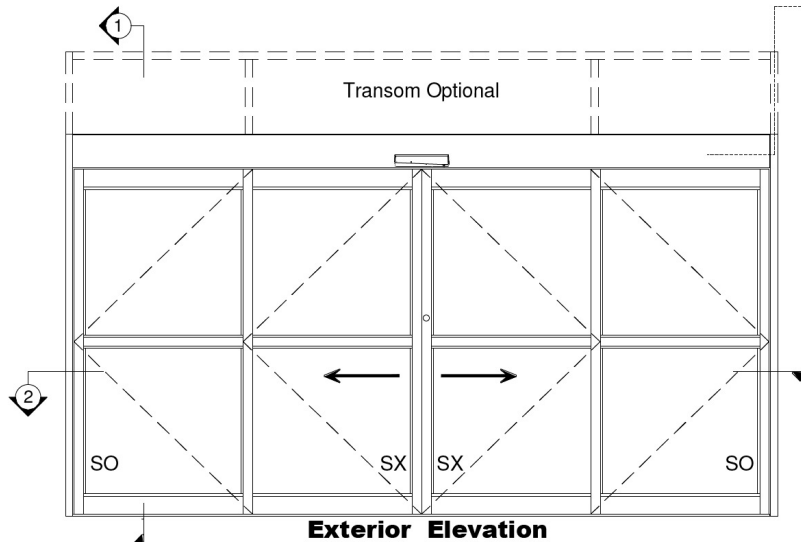
**DOORTRONIX LINEAR BEARING 2100 SERIES**

**SO - SX - SX - SO  
BIPART FULL BREAKOUT**

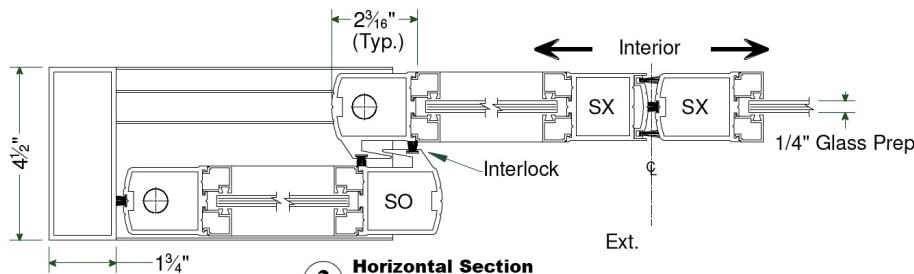
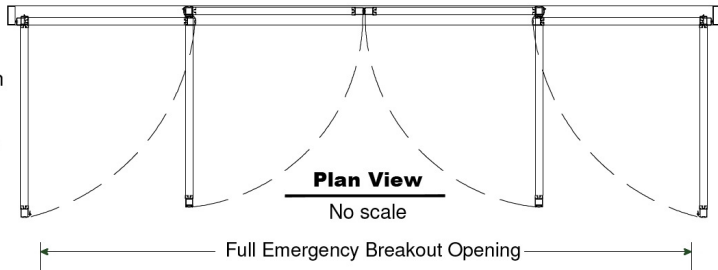
**PROJECT INFORMATION**

PROJECT NAME: \_\_\_\_\_  
 LOCATION: \_\_\_\_\_  
 DOOR \_\_\_\_\_  
 NUMBERS: \_\_\_\_\_  
 DATE: SHEET: \_\_\_\_\_ SHEET: **OF**

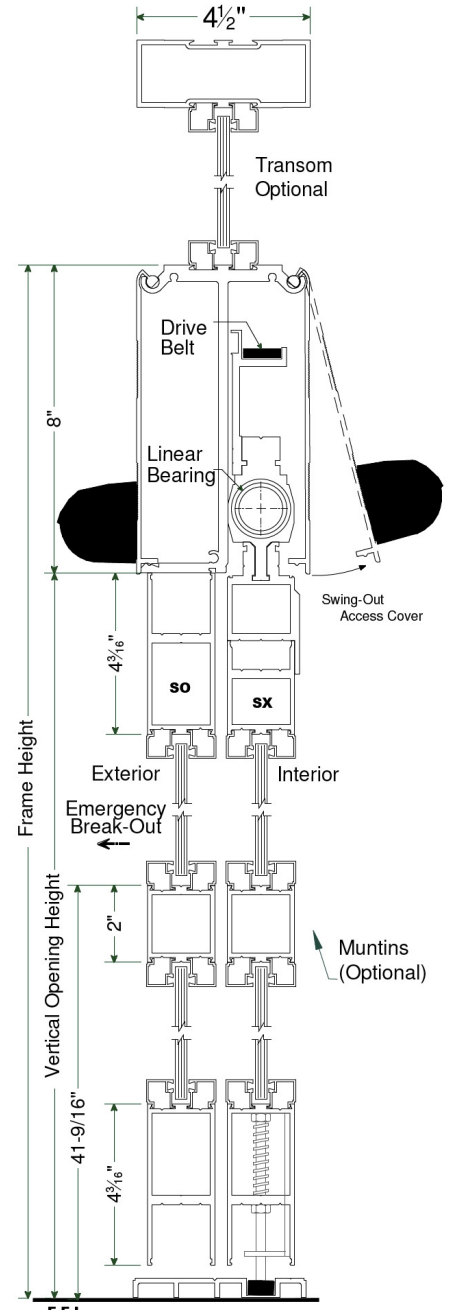
120 VAC, 15A  
Electric By Others



Panels Can Breakout From Any Position Of Travel



**2 Horizontal Section**  
SO-SX-SX-SO



**1 Vertical Section**  
No scale

**NOTES**

1. ELECTRICAL REQUIREMENTS: 120 VAC, 5 AMP MIN TO POWER OPERATOR BY ELECTRICAL CONTRACTOR.
2. ROUGH OPENING SHALL PROVIDE 1/4"[6] SHIM SPACE ON SIDES AND TOP OF PACKAGE.
3. LIMITS OF ACTIVATION AND SAFETY ZONES ARE FOR REFERENCE ONLY; SEE ANSI/BHMA A156.10 FOR DETAILED REQUIREMENTS.
4. SEE SPECIFICATIONS FOR ADDITIONAL INFORMATION.

Model	Frame Width	Frame Height	Clear Door Opening	Vertical Opening Height	Full Breakout Opening	Rough Opening Width	Rough Opening Height
SO-SX-SX-SO	9'-0" (2743)	90" (2286)	42" (915)	82" (2083)	93" (2362)	108-1/2" (2756)	90-1/2" (2299)
SO-SX-SX-SO	10'-0" (3048)	90" (2286)	48" (1067)	82" (2083)	105" (2667)	120-1/2" (3061)	90-1/2" (2299)
SO-SX-SX-SO	12'-0" (3658)	90" (2286)	60" (1219)	82" (2083)	129" (3277)	144-1/2" (3670)	90-1/2" (2299)
SO-SX-SX-SO	14'-0" (4267)	90" (2286)	72" (1524)	82" (2083)	153" (3886)	168-1/2" (4280)	90-1/2" (2299)
SO-SX-SX-SO	16'-0" (4877)	90" (2286)	84" (1829)	82" (2083)	177" (4496)	192-1/2" (4890)	90-1/2" (2299)

\* Imperial (Metric - mm) - Consult Factory For Custom Sizes